

Viola

Frank Wilhoit

Quartet No. 2, Op. 24

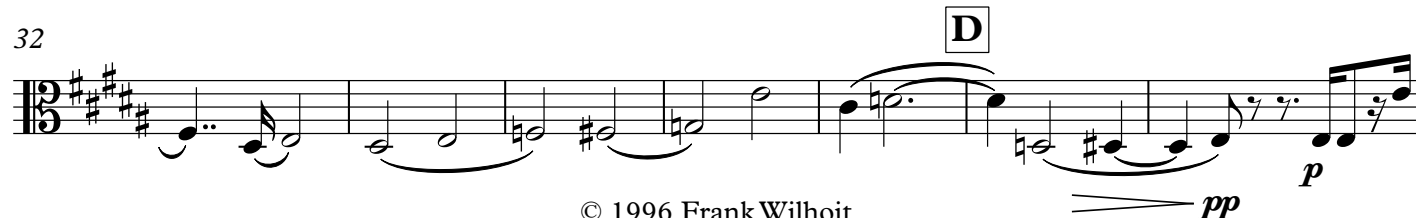
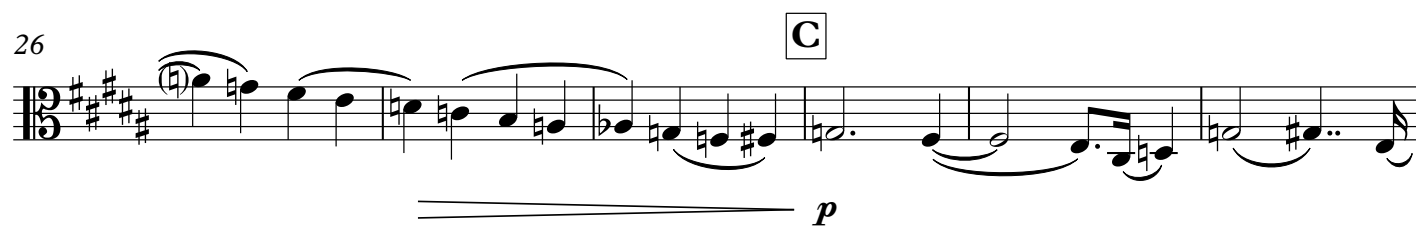
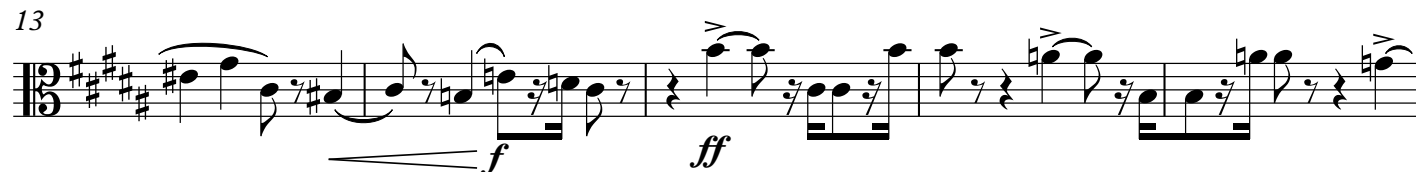
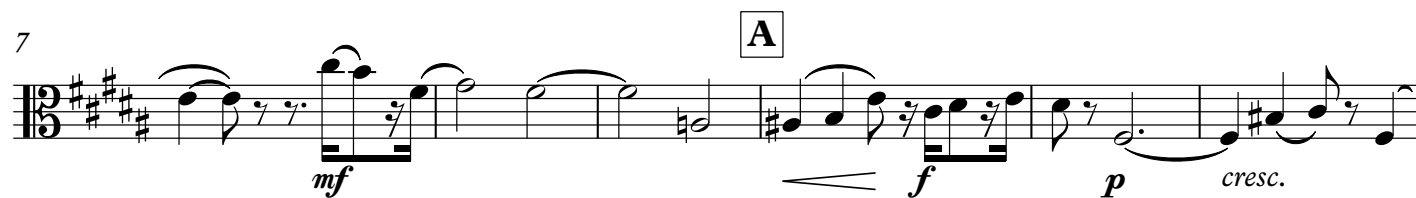
## Viola

## Quartet No. 2 in B major

for 2 Violins, Viola, and Violoncello

Frank Wilhoit, Op. 24

Allegro non troppo ♩ = 116



39

*mp* *pp*

45

**E** *f*

50

*ff* *fff*

54

**F** *ff*

59

*mf* *mp*

64

*mp*

69

*p* *pp* *p*

4

75 1. 2. I

Staff 75-80: Treble clef, 3/8 time. Measure 75: mp, first ending bracket. Measure 76: mf, second ending bracket. Measure 77: mp, V.S. mf. Measure 78: mf. Measure 79: mf. Measure 80: mf.

81

Staff 81-85: Treble clef, 3/8 time. Measure 81: mf. Measure 82: mf. Measure 83: mf. Measure 84: mf. Measure 85: mf.

86

Staff 86-90: Treble clef, 3/8 time. Measure 86: f. Measure 87: f. Measure 88: f. Measure 89: f. Measure 90: f.

90 J

Staff 90-93: Treble clef, 3/8 time. Measure 90: J. Measure 91: J. Measure 92: J. Measure 93: J.

94

Staff 94-99: Treble clef, 3/8 time. Measure 94: ff. Measure 95: ff. Measure 96: ff. Measure 97: ff. Measure 98: ff. Measure 99: ff.

100 K

Staff 100-105: Treble clef, 3/8 time. Measure 100: K. Measure 101: K. Measure 102: K. Measure 103: K. Measure 104: K. Measure 105: K.

106 L

Staff 106-112: Treble clef, 3/8 time. Measure 106: L. Measure 107: L. Measure 108: L. Measure 109: L. Measure 110: L. Measure 111: L. Measure 112: L.

113

Staff 113-119: Treble clef, 3/8 time. Measure 113: pp. Measure 114: pp. Measure 115: pp. Measure 116: pp. Measure 117: pp. Measure 118: pp. Measure 119: pp.

120 M 5

Staff 120-127: Treble clef, 3/8 time. Measure 120: M. Measure 121: 5. Measure 122: pp. Measure 123: pp. Measure 124: pp. Measure 125: pp. Measure 126: pp. Measure 127: pp.

128 N 2

Staff 128-133: Treble clef, 3/8 time. Measure 128: N. Measure 129: 2. Measure 130: mp. Measure 131: mf. Measure 132: mf. Measure 133: mf.

**TURN  
PAGE**

134 **O**

140

145 **P**

149



153 pizz.

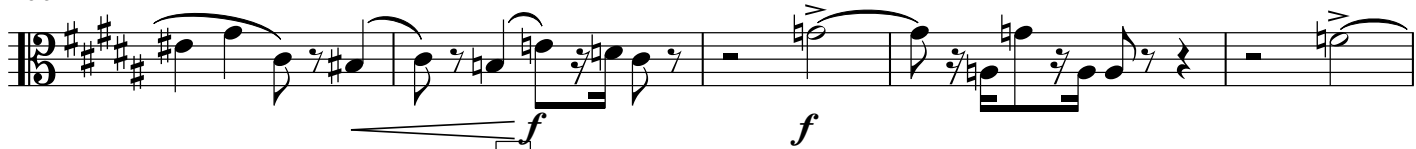
arco

**Q**

160



166



171



175

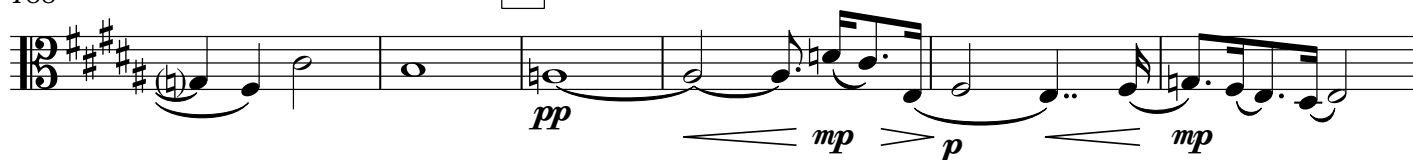


181



188

U



194

V



200



203

(2)

(3)

(4)

(5)



207

(6)

W

3



214



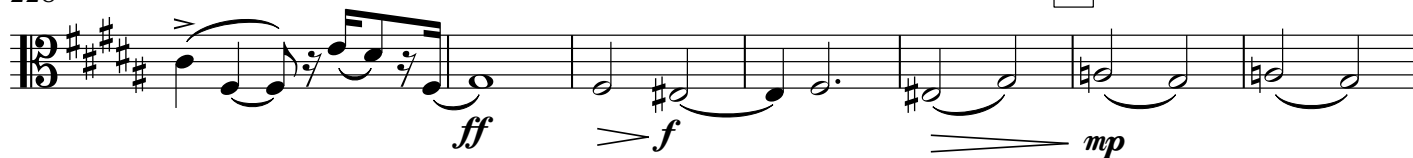
221

X



228

Y



235

pizz.



## II.

**Presto**  $\text{♩} = 92$   
arco

**A**

*p* *f* *p*

9 **B** *f*

16 **C** *p* *f* *p* *f* *pp*

24 **D** *f* *f*

31 *p* *f*

37 **E** *p*

47 **F**

54 **G** *f*

61 **H** *f* **Fine**



68 *ff* *pp*

(2) **I** (3) (4) (5)

75 (6) (7) (8) (9) (10) (11)

81 (12) (13) (14) **J** (15) (16) (17)

87 (18) (19) (20) (21) (22) (23)

93 (24) (25) (26) (27) (28) **K** (29)

99 (30) (31) (32) (33) (34) (35)

105 (36) **L** (37) (38) (39) (40) (41)

111 (42) (43) (44) (45) (46) (47)

117 (48) **M** (49) (50) (51) **D.C. al Fine** *p*

10

Largo ♩ = 44

III.

A



5

B

C



11

D

2

E

F



17

G



22

H



26

I



29

J



32 **K** **L**

*cresc. poco a poco* *mf*

Staff 32-37: Treble clef, key of B-flat major. Measures 32-37. Dynamics: *cresc. poco a poco* (measures 32-35), *mf* (measures 36-37). Markers K and L are above measures 32 and 36 respectively.

38 **M** **N**

*f* *mf* *pp*

Staff 38-41: Treble clef, key of B-flat major. Measures 38-41. Dynamics: *f* (measure 38), *mf* (measures 39-40), *pp* (measure 41). Markers M and N are above measures 39 and 40 respectively.

42 **O** **P**

*mp*

Staff 42-45: Bass clef, key of B-flat major. Measures 42-45. Dynamics: *mp* (measures 42-45). Markers O and P are above measures 43 and 44 respectively.

46 **Q**

*mf* *f*

Staff 46-49: Bass clef, key of B-flat major. Measures 46-49. Dynamics: *mf* (measures 46-47), *f* (measures 48-49). Marker Q is above measure 48.

50 **R**

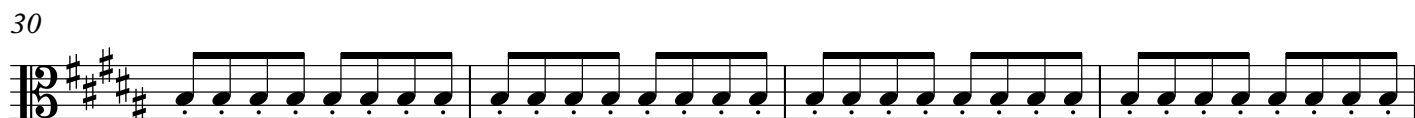
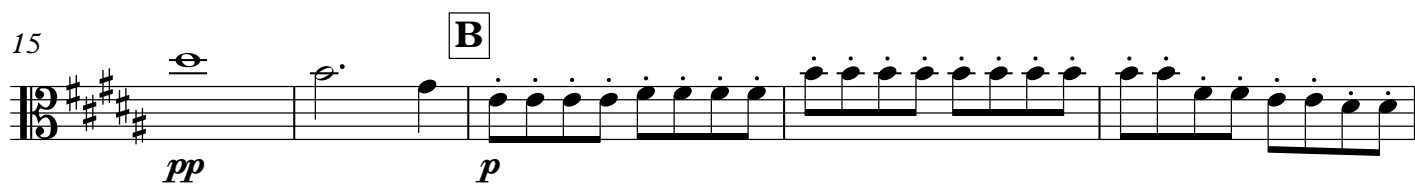
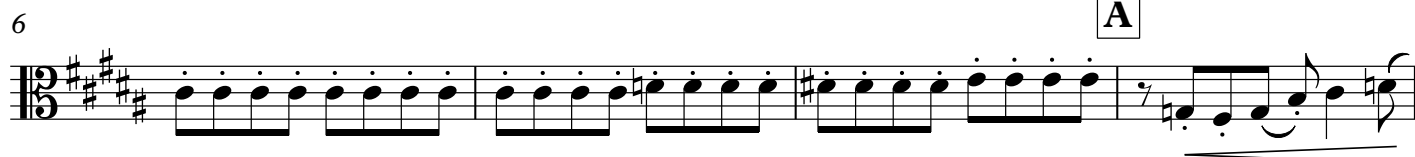
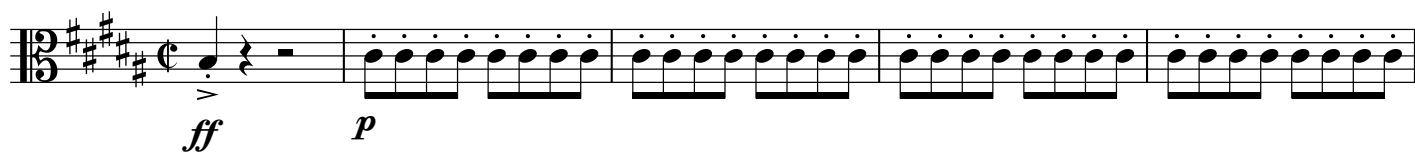
*p* *pp*

Staff 50-53: Bass clef, key of B-flat major. Measures 50-53. Dynamics: *p* (measures 50-51), *pp* (measures 52-53). Marker R is above measure 50.

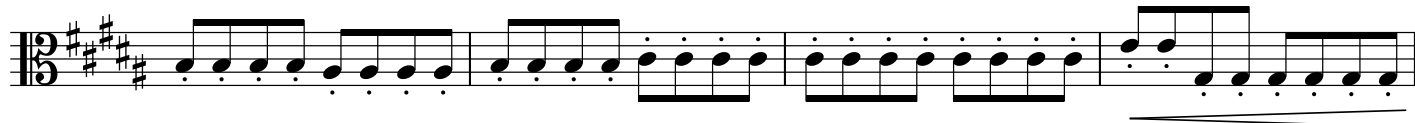
54 **S**

*ppp* *pp*

Staff 54-57: Bass clef, key of B-flat major. Measures 54-57. Dynamics: *ppp* (measures 54-55), *pp* (measures 56-57). Marker S is above measure 54.

Vivace  $\text{♩} = 84$ 

34



38

**D**

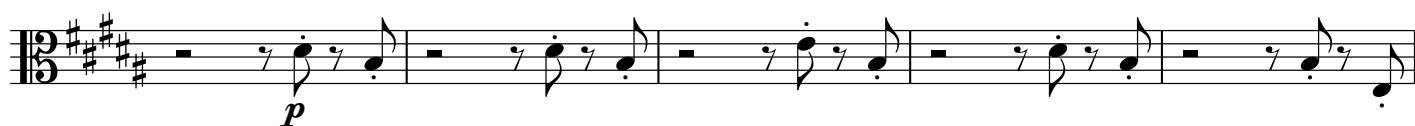
43

**E**

8

**F**

55



60

**G**

66

**H**

71



14

76

**I** **J**

*p* *f* *mp* 5

85

**K**

*p*

91

*cresc.*

99

**L**

*mf* *f* *f*

104

*f*

108

*f*

112

**M**

*ff* 8 *f*

124

**N**

*mf*

128

*mf*

132

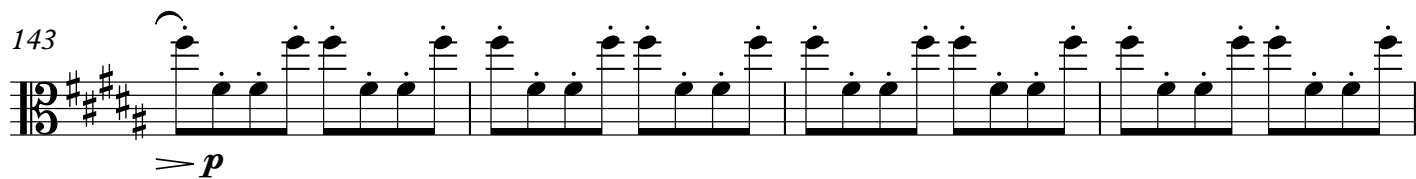
**O**

*ff* *p*

138



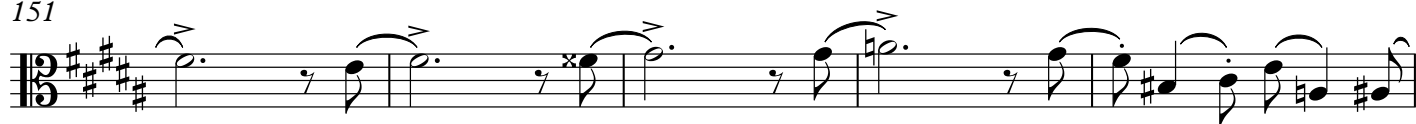
143



147



151



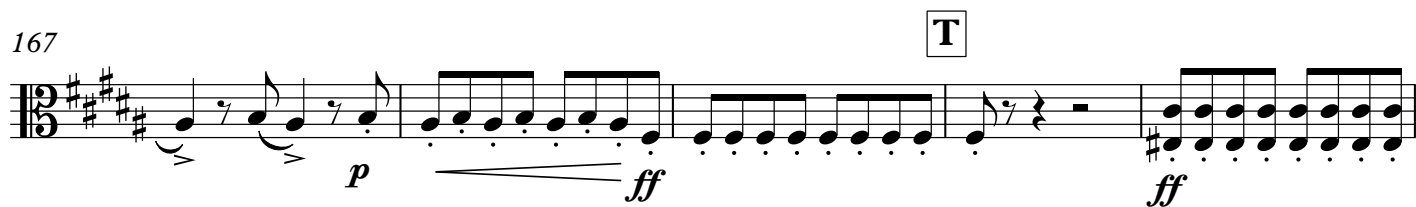
156



162



167



172



176

